



Marathwada MitraMandal's  
**INSTITUTE OF MANAGEMENT EDUCATION RESEARCH AND TRAINING**  
**(IMERT), Pune**  
S. No. 18, Plot No. 5/3, CTS No. 205, Behind Vandevi Temple, Karvenagar,  
Pune – 411052



## **1.2.1 Number of Add on/Certification/Value Added Program offered during the last five Years**

Brochures/Notices and  
Syllabus of Certifications  
Offered by Institution



**Marathwada MitraMandal's**  
**INSTITUTE OF MANAGEMENT EDUCATION RESEARCH AND TRAINING**  
**(IMERT), Pune**  
**S. No. 18, Plot No. 5/3, CTS No. 205, Behind Vandevi Temple, Karvenagar,**  
**Pune – 411052**



## Brochures/Notices and Syllabus Index

### Academic Year 2021-22

Sr. No.	Particulars
1	NPTEL Brochures

# SWAYAM - NPTEL

## COURSE BOOK

### JAN - APR 2022



Aerospace Engineering | Chemical Engineering | Mechanical Engineering  
Metallurgical And Materials Engineering | Textile Engineering

# PART - 1



IIT BOMBAY



IIT DELHI



IIT GUWAHATI



IIT KANPUR



IIT KHARAGPUR



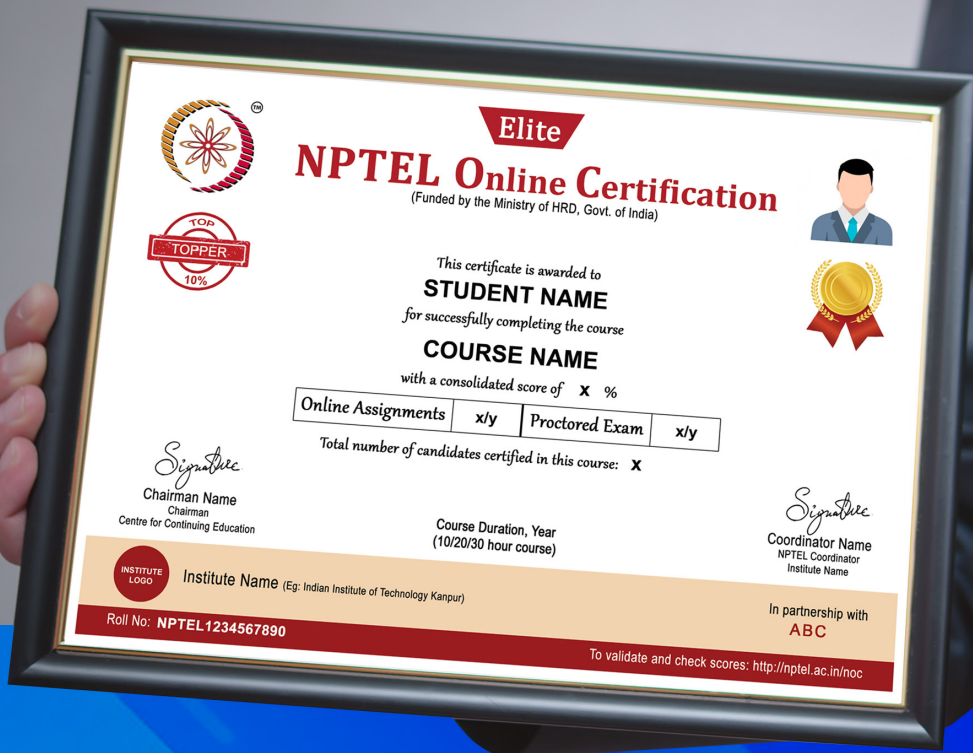
IIT MADRAS



IIT ROORKEE



IISc BANGALORE



## NPTEL is offering **Online Certification Courses**



[swayam.gov.in/NPTEL](http://swayam.gov.in/NPTEL)



**2300+**  
COURSES



**1.3**  
**BILLION+**  
VIEWS



**52402+**  
HOURS OF VIDEOS  
WITH ENGLISH  
SUBTITLES



**3.7**  
**MILLION+**  
YouTube  
SUBSCRIBERS

Aerospace Engineering
Agriculture Engineering
Architecture and Planning
Biotechnology & Bioengineering
Chemical Engineering
Chemistry
Civil Engineering
Computer Science and Engineering
Design Engineering
Electrical and Electronics Engineering
Humanities and Social Sciences
Management
Mathematics
Mechanical Engineering
Metallurgical and Materials Engineering
Multidisciplinary
Ocean Engineering
Physics
Textile Engineering

# 590+ COURSES

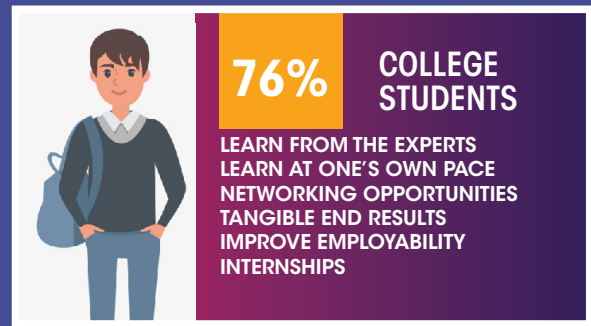
AVAILABLE ACROSS  
VARIOUS DISCIPLINES

**NO** ENTRANCE EXAMS  
**NO** ENTRY LEVEL CRITERIA  
JOIN ANY COURSE

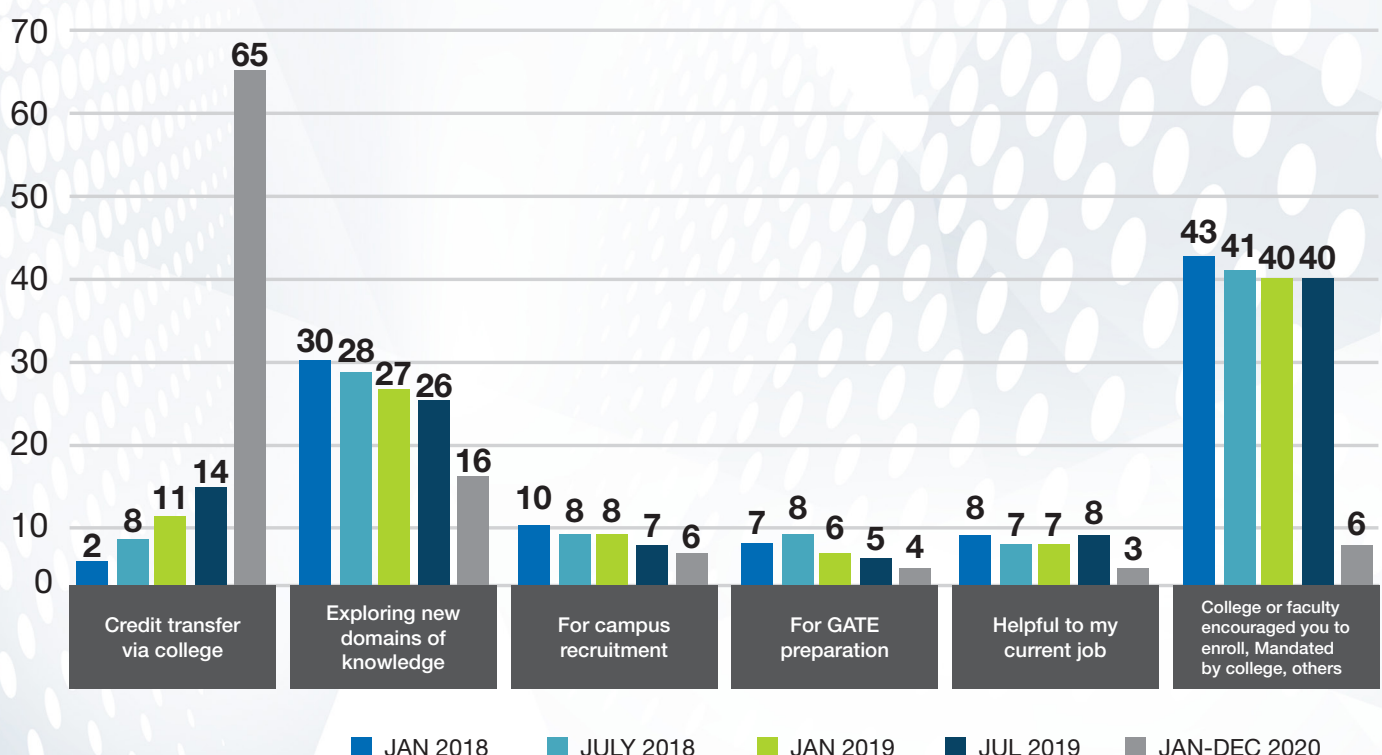


**ENROL  
FOR  
FREE!**

# LEARNER PROFILE, MOTIVATION AND RESULTS

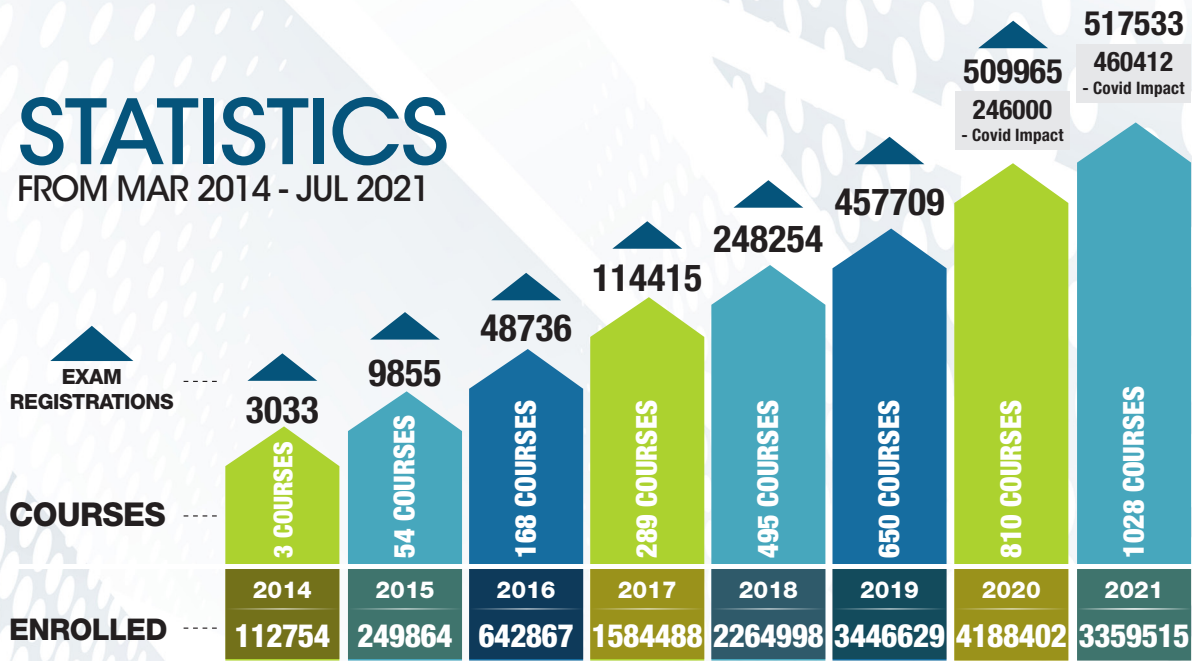


## REASON FOR TAKING THE ONLINE COURSE

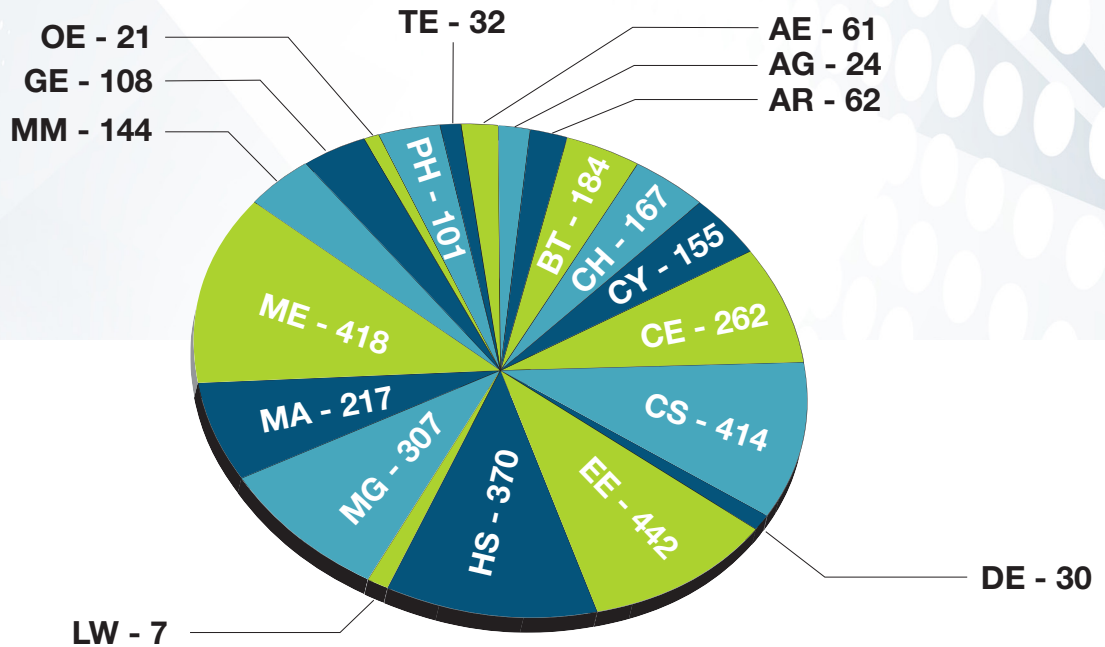


# STATISTICS

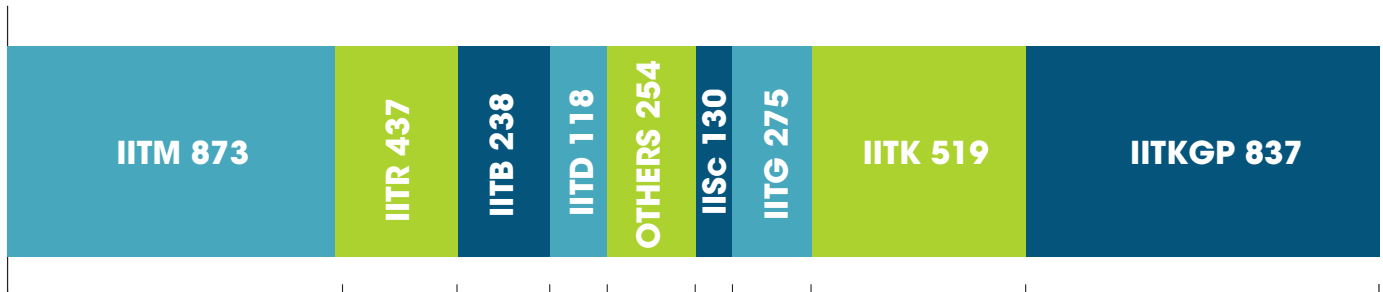
FROM MAR 2014 - JUL 2021



## COURSES BY DISCIPLINE



## OFFERING INSTITUTE



**OTHERS** - IIT Ropar, IIT Mandi, IIT Patna, IIT Bhubaneswar, IIT(BHU) Varanasi, IIITD, IIITB, IIITH, IIT H, IIT Tirupati, IIT Palakkad, IISER Pune, IISER Mohali, IISER Bhopal, IISER Thiruvananthapuram, IEST Shibpur (1 course by IIT KGP), Institute of Chemical Technology, Mumbai, ISI Bangalore, University of Hyderabad, University of Delhi, CMI, NIE, NIIR, CDSA, THSTI, DBT, KTH Royal Institute of Technology, Sweden, TU Berlin, IMSc, Kerala School of Mathematics, National Law School of India University, Texas A&M Univ., University of Strasbourg



**Marathwada MitraMandal's**  
**INSTITUTE OF MANAGEMENT EDUCATION RESEARCH AND TRAINING**  
**(IMERT), Pune**  
**S. No. 18, Plot No. 5/3, CTS No. 205, Behind Vandevi Temple, Karvenagar,**  
**Pune – 411052**



## Students Attendance Index

### Academic Year 2021-22

Sr. No.	Particulars
1	List of NPTEL Certifications Syllabus





Since 1994

**Marathwada Mitra Mandal's**  
**INSTITUTE OF MANAGEMENT EDUCATION RESEARCH AND TRAINING**  
**(MM's IMERT), Pune**

**S. No. 18, Plot No. 5/3, CTS No. 205, Behind Vandevi Temple, Karvenagar, Pune – 411052**

Project Management - Course

## MM's Institute of Management Education Research & Training NPTEL Courses



(<https://swayam.gov.in/>)



([https://swayam.gov.in/nc\\_details/NPTEL](https://swayam.gov.in/nc_details/NPTEL))

About Swayam (<https://swayam.gov.in/about>) | All Courses | [vivekanandgaikwad@mmimert.edu.in](mailto:vivekanandgaikwad@mmimert.edu.in) (/[profile](#))

Home (<https://swayam.gov.in>) > Courses (<https://swayam.gov.in/explorer>) >

### Project Management

By Prof. Raghu Nandan Sengupta | IIT Kanpur

Join ([/update\\_profile\\_and\\_register?user\\_email=vivekanandgaikwad@mmimert.edu.in&raw\\_slug=/noc24\\_mg75](/update_profile_and_register?user_email=vivekanandgaikwad@mmimert.edu.in&raw_slug=/noc24_mg75))

### Course layout

- Risk associated with Projects Decision
- Tree Modeling
- Cost Evaluation Techniques in Project Management
- GANNT Chart and Precedence Diagrams
- PER, CPM
- Project Life Cycles
- Concepts of Scheduling
- GERT
- Q-GERT
- Critical Chain and Theory of Constraints
- Activity Network Diagram

### Course certificate

The course is free to enroll and learn from. But if you want a certificate, you have to register and write the proctored exam conducted by us in person at any of the designated exam centres.

The exam is optional for a fee of Rs 1000/- (Rupees one thousand only).

Date and Time of Exams: **22 September 2024** Morning session 9am to 12 noon;

Afternoon Session 2pm to 5pm.

Registration url: Announcements will be made when the registration form is open for registrations.

The online registration form has to be filled and the certification exam fee needs to be paid. More details will be made available when the exam registration form is published. If there are any changes, it will be mentioned then.

Please check the form for more details on the cities where the exams will be held, the conditions you agree to when you fill the form etc.

#### CRITERIA TO GET A CERTIFICATE

Average assignment score = 25% of average of best 6 assignments out of the total 8 assignments given in the course.

Exam score = 75% of the proctored certification exam score out of 100

Final score = Average assignment score + Exam score

**YOU WILL BE ELIGIBLE FOR A CERTIFICATE ONLY IF AVERAGE ASSIGNMENT SCORE  $\geq 10/25$  AND EXAM SCORE  $\geq 30/75$ . If one of the 2 criteria is not met, you will not get the certificate even if the Final score  $\geq 40/100$ .**



Since 1994

**Marathwada Mitra Mandal's**  
**INSTITUTE OF MANAGEMENT EDUCATION RESEARCH AND TRAINING**  
**(MM's IMERT), Pune**

**S. No. 18, Plot No. 5/3, CTS No. 205, Behind Vandevi Temple, Karvenagar, Pune – 411052**



(<https://swayam.gov.in/>)



([https://swayam.gov.in/nc\\_details/NPTEL](https://swayam.gov.in/nc_details/NPTEL))

About Swayam (<https://swayam.gov.in/about>) | All Courses | [vivekanandgaikwad@mmimert.edu.in](mailto:vivekanandgaikwad@mmimert.edu.in) v (/profile)

Home (<https://swayam.gov.in>) > Courses (<https://swayam.gov.in/explorer>) >

## Corporate Finance

By Prof. Abhijeet Chandra | IIT Kharagpur

Join ([/update\\_profile\\_and\\_register?user\\_email=vivekanandgaikwad@mmimert.edu.in&raw\\_slug=/noc24\\_mg85](/update_profile_and_register?user_email=vivekanandgaikwad@mmimert.edu.in&raw_slug=/noc24_mg85))

## Course layout

**Week 1** : Introduction to Corporate Finance and Related Concepts (Sources of finance and risk and return)

**Week 2** : Time value of money and long-term investment decisions

**Week 3** : Investing Decisions: Project appraisal and capital budgeting decisions

**Week 4** : Financing Decisions: Cost of capital and its impact on firm valuation

**Week 5** : Financing Decisions: Capital structure theories and applications, concepts of leverage

**Week 6** : Working Capital Management: Profitability and liquidity, operating and cash conversion cycles

**Week 7** : Working Capital Management: Debtors, inventory, and payables

**Week 8** : Payout Decisions: Dividend theories, models, and applications

**YOU WILL BE ELIGIBLE FOR A CERTIFICATE ONLY IF AVERAGE ASSIGNMENT SCORE  $\geq 10/25$  AND EXAM SCORE  $\geq 30/75$ . If one of the 2 criteria is not met, you will not get the certificate even if the Final score  $\geq 40/100$ .**

Certificate will have your name, photograph and the score in the final exam with the breakup. It will have the logos of NPTEL and IIT Kharagpur. It will be e-verifiable at [nptel.ac.in/noc](http://nptel.ac.in/noc) (<http://nptel.ac.in/noc>).

Only the e-certificate will be made available. Hard copies will not be dispatched.

Once again, thanks for your interest in our online courses and certification. Happy learning.



Since 1994

**Marathwada Mitra Mandal's**  
**INSTITUTE OF MANAGEMENT EDUCATION RESEARCH AND TRAINING**  
**(MM's IMERT), Pune**

**S. No. 18, Plot No. 5/3, CTS No. 205, Behind Vandevi Temple, Karvenagar, Pune – 411052**



(<https://swayam.gov.in/>)



([https://swayam.gov.in/nc\\_details/IIMB](https://swayam.gov.in/nc_details/IIMB))

About Swayam (<https://swayam.gov.in/about>) | All Courses | [vivekanandgaikwad@mmimert.edu.in](mailto:vivekanandgaikwad@mmimert.edu.in) (/profile)

Home (<https://swayam.gov.in>) > Courses (<https://swayam.gov.in/explorer>) >

## Marketing Management

By Ashis Mishra | Indian Institute of Management Bangalore (IIMB)

### Course layout

**Week 1:** Introduction to Marketing

**Week 2:** Segmentation and Targeting

**Week 3:** Differentiation and Positioning

**Week 4:** Consumer Behavior

**Week 5:** B2B Marketing and Marketing Strategy (Product Decisions)

**Week 6:** Marketing Strategy (Product, Service and Pricing Decisions)

**Week 7:** Marketing Strategy (Place Decisions)

**Week 8:** Marketing Strategy (Promotion) and Product Life Cycle\*

### Course certificate

Enrolling and learning from the course is free. However, if you wish to obtain a certificate, you must register and take the proctored exam in person at one of the designated exam centre's. The registration URL will be announced when the registration form is open. To obtain the certification, you need to fill out the online registration form and pay the exam fee. More details will be provided when the exam registration form is published, including any potential changes. For further information on the exam locations and the conditions associated with filling out the form, please refer to the form.

#### Grading Policy:

Assessment Type	Weightage
Mid-Term & End-Term	25%
Final Exam	75%



Since 1994

**Marathwada Mitra Mandal's**  
**INSTITUTE OF MANAGEMENT EDUCATION RESEARCH AND TRAINING**  
**(MM's IMERT), Pune**

**S. No. 18, Plot No. 5/3, CTS No. 205, Behind Vandevi Temple, Karvenagar, Pune – 411052**



(<https://swayam.gov.in/>)



([https://swayam.gov.in/nc\\_details/NPTEL](https://swayam.gov.in/nc_details/NPTEL))

x

About Swayam (<https://swayam.gov.in/about>) | All Courses | [vivekanandgaikwad@mmimert.edu.in](mailto:vivekanandgaikwad@mmimert.edu.in) ~ (/profile)

Home (<https://swayam.gov.in>) > Courses (<https://swayam.gov.in/explorer>) >

## Working Capital Management

By Prof. Anil K. Sharma | IIT Roorkee

### Course layout

**Week1:** Introduction, meaning, concepts, classification and importance of working capital, Relevance of current assets and current liabilities in the balance sheet, Objectives of WCM. Over-capitalisation, under-capitalisation, zero working capital, Short-term v/s long term financing-A risk-return trade-off. Liquidity v/s profitability trade-off. Cost trade-off, Working capital approaches. Working capital management in some companies.

**Week2:** Factors determining working capital requirements, Assessment and forecasting of working capital requirements, Assessment and forecasting of working capital requirements. Operating cycle, Weighted Operating cycle.

**Week3:** Relevance of current assets and current liabilities and their inter-relationship, Management of different current assets, Management of Inventory. Relevance and scope, Deciding the optimum level of inventory in a firm, Purpose and benefits of holding inventory.

**Week4:** Risk and cost of holding inventory, Inventory management - tools, techniques, Inventory management - tools, techniques, Inventory management - tools, techniques, Inventory management models.

**Week5:** Inventory management models, Determining stock levels and safety stocks, Types of organizations holding inventory, Inventory strategies & techniques, Inventory strategies & techniques.

**Week6:** Cases on Inventory Management, Management of Accounts Receivables, Creation and size of accounts receivables, Motives of extending credit, Limitations of A/Rs-Marginal tax considerations.

**Week7:** Limitations of A/Rs-Tax considerations, Determining maximum length of credit period, Credit terms, opportunity costs, receivables at cost or sale price, Goals and functions of A/Rs management, Short-term changes in credit policy, Long-term changes in credit policy.

**Week8:** Financial statements analysis wrt. A/Rs, Financial statements analysis wrt. A/Rs, Financial, Cash management-meaning and concept statements analysis wrt. A/Rs, Cash management-meaning and concept, Cash v/s profit. Cash flow, cash stock and cash to current assets ratio.

**Week9:** Cash flow presentation as per IFRS, NOCF & priority outflows, Management of liquidity-Shiftability theory, Liquidity newly defined, liquidity crises & firm level action, Measurement of liquidity.

**Week10:** Window dressing, Certainty model by Baumol, Uncertainty model by Miller & Orr, Cash flow forecasting, Cash collection system.

**Week11:** Management of Accounts Payables, Trade credits-terms of purchase, stretching accounts payables, Cost of Stretching A/Ps, The model of cost of stretching A/Ps, Overtrading and the need of a good information system.

**Week12:** Financing Working Capital Gap, Sources of working capital finance, Bank finance, Tandon and Chore committees on Bank finance, Other sources of working capital finance and deciding a suitable mix.



Since 1994

**Marathwada Mitra Mandal's**  
**INSTITUTE OF MANAGEMENT EDUCATION RESEARCH AND TRAINING**  
**(MM's IMERT), Pune**

**S. No. 18, Plot No. 5/3, CTS No. 205, Behind Vandevi Temple, Karvenagar, Pune – 411052**



(<https://swayam.gov.in/>)



([https://swayam.gov.in/nc\\_details/NPTEL](https://swayam.gov.in/nc_details/NPTEL))

x

[About Swayam \(https://swayam.gov.in/about\)](https://swayam.gov.in/about) | [All Courses](#) | [vivekanandgaikwad@mmimert.edu.in](mailto:vivekanandgaikwad@mmimert.edu.in) ▾ (/profile)

[Home \(https://swayam.gov.in\)](https://swayam.gov.in) > [Courses \(https://swayam.gov.in/explorer\)](https://swayam.gov.in/explorer) >

## Financial Accounting

By Prof. Varadraj Bapat | IIT Bombay

### Course layout

#### **Week 1:** Introduction and Scope of Accounting

Financial Statements

Balance Sheet 1

Balance Sheet 2

Balance Sheet 3

#### **Week 2:** Balance Sheet 4

Balance Sheet 5

Profit and Loss Account 1

Profit and Loss Account 2

Profit and Loss Account 3

#### **Week 3:** Depreciation 1

Depreciation 2

Inventory Valuation

Cash Flow Statement 1

Cash Flow Statement 2

#### **Week 4:** Cash Flow Statement 3

Cash Flow Statement 4

Cash Flow Statement 5

Corporate Governance

Corporate Governance: Global Models

#### **Week 5:** Corporate Governance: Enron Case

Accounting Standards and Principles

Evolution of Accounting

Recording of Financial Transactions

Zee Case: Profit & Loss and Balance Sheet

#### **Week 6:** Zee Case: Balance Sheet

Hindalco Case: Profit & Loss and Balance Sheet

Hindalco Case: Balance Sheet and Cash Flow Statement

Interpretation and Analysis of Financial Statements

Ratio Analysis and Interpretation 1

#### **Week 7:** Ratio Analysis and Interpretation 2

Interpretation and Analysis of Financial Statements: Shipping Corp. of India 1

Interpretation and Analysis of Financial Statements: Shipping Corp. of India 2

Interpretation and Analysis of Financial Statements: Shipping Corp. of India 3

Interpretation and Analysis of Financial Statements: Shipping Corp. of India 4



Since 1994

**Marathwada Mitra Mandal's  
INSTITUTE OF MANAGEMENT EDUCATION RESEARCH AND TRAINING  
(MM's IMERT), Pune**

**S. No. 18, Plot No. 5/3, CTS No. 205, Behind Vandevi Temple, Karvenagar, Pune – 411052**

7/10/24, 8:20 PM

Services Marketing: Concepts & Applications - Course



(<https://swayam.gov.in/>)



([https://swayam.gov.in/nc\\_details/IIMB](https://swayam.gov.in/nc_details/IIMB))

<

[About Swayam \(https://swayam.gov.in/about\)](https://swayam.gov.in/about) | [All Courses](#) | [vivekanandgaikwad@mmimert.edu.in](mailto:vivekanandgaikwad@mmimert.edu.in) v (/profile)

[Home \(https://swayam.gov.in\)](https://swayam.gov.in) > [Courses \(https://swayam.gov.in/explorer\)](https://swayam.gov.in/explorer) >

## Services Marketing: Concepts & Applications

### Course layout

**Week 1:** Fundamentals of Services Marketing

**Week 2:** Service Product & Branding

**Week 3:** Price & Promotion of Services

**Week 4:** Place & Process Decisions

**Week 5:** People & Physical Evidence

**Week 6:** Service Excellence



Since 1994

**Marathwada Mitra Mandal's**  
**INSTITUTE OF MANAGEMENT EDUCATION RESEARCH AND TRAINING**  
**(MM's IMERT), Pune**

**S. No. 18, Plot No. 5/3, CTS No. 205, Behind Vandevi Temple, Karvenagar, Pune – 411052**

7/10/24, 8:23 PM

Behavioural Finance - Course



(<https://swayam.gov.in/>)



([https://swayam.gov.in/nc\\_details/IIMB](https://swayam.gov.in/nc_details/IIMB))

x

[About Swayam \(https://swayam.gov.in/about\)](https://swayam.gov.in/about) | [All Courses](#) | [vivekanandgaikwad@mmimert.edu.in](mailto:vivekanandgaikwad@mmimert.edu.in) ( /profile)

[Home \(https://swayam.gov.in\)](https://swayam.gov.in) > [Courses \(https://swayam.gov.in/explorer\)](https://swayam.gov.in/explorer) >

## Behavioural Finance

By Prof. Shikta Singh | KIIT(Deemed to be) University, Bhubaneswar

## Course layout

Week 1: An Introduction to Behavioural Finance

Week 2: Dimensions of Behavioural Finance

Week 3: Implications of Dimensions of Behavioural Finance

Week 4: Knowing Market Anomalies

Week 5: Heuristics & Behavioral Biases

Week 6: Understanding Investor's behavior

Week 7 : Behavioural Corporate Finance

Week 8: The Way forward



Since 1994

**Marathwada Mitra Mandal's  
INSTITUTE OF MANAGEMENT EDUCATION RESEARCH AND TRAINING  
(MM's IMERT), Pune**

**S. No. 18, Plot No. 5/3, CTS No. 205, Behind Vandevi Temple, Karvenagar, Pune – 411052**



(<https://swayam.gov.in/>)



([https://swayam.gov.in/nc\\_details/NCERT](https://swayam.gov.in/nc_details/NCERT))

x

About Swayam (<https://swayam.gov.in/about>) | All Courses | [vivekanandgaikwad@mmimert.edu.in](mailto:vivekanandgaikwad@mmimert.edu.in) (/profile)

Home (<https://swayam.gov.in>) > Courses (<https://swayam.gov.in/explorer>) >

### Economics XI Part-I

By Dr. M.V. Srinivasan | DESS, New Delhi

#### Course layout

Chapter No.	Module No.	Module Name
Chapter 1	Module 1	Indian Economy on the Eve of Independence
	Assignment 1	
Chapter 2	Module 2	Indian Economy (1950-1990)
	Assignment 2	
Chapter 3	Module 3	Economic Reform Since 1991 – Part 1
	Module 4	Economic Reform Since 1991 – Part 2
	Assignment 3	
Chapter 4	Module 5	Poverty
	Assignment 4	
Chapter 5	Module 6	Human Capital Formation – Part 1
	Module 7	Human Capital Formation – Part 2
	Assignment 5	
Chapter 6	Module 8	Rural Development – Part 1
	Module 9	Rural Development - Part 2
	Assignment 6	
Chapter 7	Module 10	Growth of Employment and Workforce in India
	Module 11	Informalisation and Unemployment Problem
	Assignment 7	
Chapter 8	Module 12	Infrastructure – Part 1
	Module 13	Infrastructure – Part 2
	Assignment 8	
Chapter 9	Module 14	Environment and Sustainable Development
	Assignment 9	
Chapter 10	Module 15	Comparative Development Experiences of India and Its Neighbors
	Assignment 10	
	Final Assessment	





Since 1994

**Marathwada Mitra Mandal's  
INSTITUTE OF MANAGEMENT EDUCATION RESEARCH AND TRAINING  
(MM's IMERT), Pune**

**S. No. 18, Plot No. 5/3, CTS No. 205, Behind Vandevi Temple, Karvenagar, Pune – 411052**



(<https://swayam.gov.in/>)



([https://swayam.gov.in/nc\\_details/IIMB](https://swayam.gov.in/nc_details/IIMB))

x

[About Swayam \(https://swayam.gov.in/about\)](https://swayam.gov.in/about) | [All Courses](#) | [vivekanandgaikwad@mmimert.edu.in](mailto:vivekanandgaikwad@mmimert.edu.in) [v \(/profile\)](#)

[Home \(https://swayam.gov.in\)](https://swayam.gov.in) > [Courses \(https://swayam.gov.in/explorer\)](https://swayam.gov.in/explorer) >

## Services Marketing: Concepts & Applications

By Shainesh G | Indian Institute of Management Bangalore (IIMB)

### Course layout

**Week 1:** Fundamentals of Services Marketing

**Week 2:** Service Product & Branding

**Week 3:** Price & Promotion of Services

**Week 4:** Place & Process Decisions

**Week 5:** People & Physical Evidence

**Week 6:** Service Excellence

Prepared by :- Prof. Vivekanand Gaikwad, Assistant Professor

Reviewed by :- Dr. Jitendra Bhandari, Associate Professor

Approved By: Dr. Shubhangee Ramaswamy, I/c Director